



Features

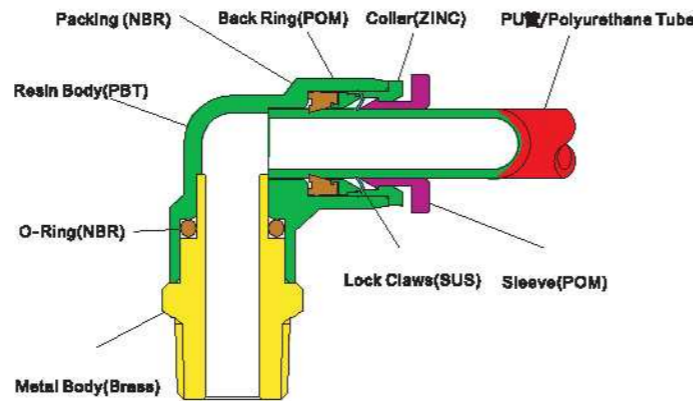
- One-Touch tube fittings are used in pneumatics piping.
- The tube fittings come in a wide variety of models to meet all your needs in pneumatics piping.
- Even after installation, the direction of the tube can be changed freely.
- Nickel-Plated metal body ensures Anti-Corrosion and Anti-Contamination.
- All R and NPT threads are Pre-Coated sealant.
- All cylindrical threads are standard with O-Ring seals.



SPECIFICATIONS

/Fluid	Air, Vacuum
Operating Pressure	0-1.0MPa
/Negative Pressure	-100KPa(10Torr)
Max Pressure	1.5MPa
/Operating Temperature	5~60°C
/Applicable Tube	Polyurethane and Nylon

STRUCTURE CHART



I **PC** **8** - **01** - *****
(1) (2) (3) (4) (5)
ISAIAH FITTINGS.
MODEL.
TUBE OUTER DIA.

Metric Size													
Code	4	5	6	7	8	9	10	11	12	13	14	15	16
Tube Outer Diameter mm	Φ4	Φ5	Φ6	Φ7	Φ8	Φ9	Φ10	Φ11	Φ12	Φ13	Φ14	Φ15	Φ16

Inch Size						
Code	5/32	3/16	1/4	5/16	3/8	1/2
Tube Outer Diameter mm	Φ5/32	Φ3/16	Φ1/4	Φ5/16	Φ3/8	Φ1/2

Thread Type and size

Metric Size									
Code	M5	M6	M8	M10	M12	M12A	M14	M16	M20
Thread	M5*0.8	M6*1	M8*1	M10*1	M12*1.25	M12*1.5	M14*1.5	M16*1.5	M20*1.5

55°Taper Pipe Size					
Code	01	02	03	04	06
Thread	R1/8	R1/4	R3/8	R1/2	R3/4

55°Taper Pipe Size					
Code	G01	G02	G03	G04	G06
Thread	G1/8	G1/4	G3/8	G1/2	G3/4

UNF /American Standard Taper Pipe Thread(NPT)						
Code	U10	N01	N02	N03	N04	N06
Thread	10-32UNF	NPT1/8	NPT1/4	NPT3/8	NPT1/2	NPT3/4

Color : Blank :Blue A: Gray BK: Black

Note: The external dimension of fitting size is connected the outer diameter odd no. (Φ5、Φ7、Φ9、Φ11、Φ13) will be suit Φ6、Φ8、Φ10、Φ12、Φ14

IPC



MODEL				
IPC04-M5	IPC06-M6	IPC08-02	IPC10-04	IPC14-04
IPC04-M6	IPC06-01	IPC06-03	IPC12-01	IPC15-03
IPC04-01	IPC06-02	IPC06-04	IPC12-02	IPC15-04
IPC04-02	IPC06-03	IPC10-01	IPC12-03	IPC16-03
IPC04-03	IPC06-04	IPC10-02	IPC12-04	IPC16-04
IPC06-M5	IPC06-01	IPC10-03	IPC14-03	IPC16-06

IPC-N NPT



MODEL				
IPC5/32-N01	IPC1/4-N01	IPC5/16-N01	IPC3/8-N01	IPC1/2-N01
IPC5/32-N02	IPC1/4-N02	IPC5/16-N02	IPC3/8-N02	IPC1/2-N02
IPC3/16-N01	IPC1/4-N03	IPC5/16-N03	IPC3/8-N03	IPC1/2-N03
IPC3/16-N02	IPC1/4-N04	IPC5/16-N04	IPC3/8-N04	IPC1/2-N04

IPOC



MODEL				
IPOC04-M5	IPOC06-M6	IPOC06-01	IPOC10-02	IPOC12-03
IPOC04-M6	IPOC06-01	IPOC06-02	IPOC10-03	IPOC12-04
IPOC04-01	IPOC06-02	IPOC06-03	IPOC10-04	IPOC16-03
IPOC04-02	IPOC06-03	IPOC06-04	IPOC12-01	IPOC16-04
IPOC06-M5	IPOC06-04	IPOC10-01	IPOC12-02	

IPCF



MODEL				
IPCF04-M5	IPCF06-M6	IPCF06-01	IPCF10-02	IPCF12-03
IPCF04-M6	IPCF06-01	IPCF06-02	IPCF10-03	IPCF12-04
IPCF04-01	IPCF06-02	IPCF06-03	IPCF10-04	IPCF16-03
IPCF04-02	IPCF06-03	IPCF06-04	IPCF12-01	IPCF16-04
IPCF06-M5	IPCF06-04	IPCF10-01	IPCF12-02	

IPCF-N NPT



MODEL				
IPCF5/32-N01	IPCF1/4-N01	IPCF5/16-N01	IPCF3/8-N01	IPCF1/2-N01
IPCF5/32-N02	IPCF1/4-N02	IPCF5/16-N02	IPCF3/8-N02	IPCF1/2-N02
IPCF3/16-N01	IPCF1/4-N03	IPCF5/16-N03	IPCF3/8-N03	IPCF1/2-N03
IPCF3/16-N02	IPCF1/4-N04	IPCF5/16-N04	IPCF3/8-N04	IPCF1/2-N04



IPB



MODEL				
IPB04-M5	IPB06-M6	IPB08-02	IPB10-04	IPB14-04
IPB04-M6	IPB06-01	IPB08-03	IPB12-01	IPB15-03
IPB04-01	IPB06-02	IPB08-04	IPB12-02	IPB15-04
IPB04-02	IPB06-03	IPB10-01	IPB12-03	IPB16-03
IPB04-03	IPB06-04	IPB10-02	IPB12-04	IPB16-04
IPB06-M5	IPB08-01	IPB10-03	IPB14-03	IPB16-06

IPB-N



MODEL				
IPB5/32-N01	IPB1/4-N01	IPB5/16-N01	IPB3/8-N01	IPB1/2-N01
IPB5/32-N02	IPB1/4-N02	IPB5/16-N02	IPB3/8-N02	IPB1/2-N02
IPB3/16-N01	IPB1/4-N03	IPB5/16-N03	IPB3/8-N03	IPB1/2-N03
IPB3/16-N02	IPB1/4-N04	IPB5/16-N04	IPB3/8-N04	IPB1/2-N04

IPD



MODEL				
IPD04-M5	IPD06-M6	IPD08-02	IPD10-04	IPD14-04
IPD04-M6	IPD06-01	IPD08-03	IPD12-01	IPD15-03
IPD04-01	IPD08-02	IPD08-04	IPD12-02	IPD15-04
IPD04-02	IPD06-03	IPD10-01	IPD12-03	IPD16-03
IPD04-03	IPD06-04	IPD10-02	IPD12-04	IPD16-04
IPD06-M5	IPD08-01	IPD10-03	IPD14-03	IPD16-06

IPD-N



MODEL				
IPD5/32-N01	IPD1/4-N01	IPD5/16-N01	IPD3/8-N01	IPD1/2-N01
IPD5/32-N02	IPD1/4-N02	IPD5/16-N02	IPD3/8-N02	IPD1/2-N02
IPD3/16-N01	IPD1/4-N03	IPD5/16-N03	IPD3/8-N03	IPD1/2-N03
IPD3/16-N02	IPD1/4-N04	IPD5/16-N04	IPD3/8-N04	IPD1/2-N04

IPL



MODEL				
IPL04-M5	IPL06-M6	IPL08-02	IPL10-04	IPL14-04
IPL04-M6	IPL06-01	IPL08-03	IPL12-01	IPL15-03
IPL04-01	IPL06-02	IPL08-04	IPL12-02	IPL15-04
IPL04-02	IPL06-03	IPL10-01	IPL12-03	IPL16-03
IPL04-03	IPL06-04	IPL10-02	IPL12-04	IPL16-04
IPL06-M5	IPL08-01	IPL10-03	IPL14-03	IPL16-06

IPL-N NPT



MODEL				
IPL5/32-N01	IPL1/4-N01	IPL5/16-N01	IPL3/8-N01	IPL1/2-N01
IPL5/32-N02	IPL1/4-N02	IPL5/16-N02	IPL3/8-N02	IPL1/2-N02
IPL3/16-N01	IPL1/4-N03	IPL5/16-N03	IPL3/8-N03	IPL1/2-N03
IPL3/16-N02	IPL1/4-N04	IPL5/16-N04	IPL3/8-N04	IPL1/2-N04

IPLL



MODEL				
IPLL04-M5	IPLL06-M6	IPLL08-01	IPLL10-02	IPLL12-03
IPLL04-M6	IPLL08-01	IPLL08-02	IPLL10-03	IPLL12-04
IPLL04-01	IPLL06-02	IPLL08-03	IPLL10-04	
IPLL04-02	IPLL06-03	IPLL08-04	IPLL12-01	
IPLL06-M5	IPLL06-04	IPLL10-01	IPLL12-02	

IPL45



MODEL				
IPL45 04-M5	IPL45 06-M5	IPL45 06-04	IPL45 10-01	IPL45 12-02
IPL45 04-M6	IPL45 06-M6	IPL45 08-01	IPL45 10-02	IPL45 12-03
IPL45 04-01	IPL45 08-01	IPL45 08-02	IPL45 10-03	IPL45 12-04
IPL45 04-02	IPL45 08-02	IPL45 08-03	IPL45 10-04	
IPL45 04-03	IPL45 08-03	IPL45 08-04	IPL45 12-01	

IPLF



MODEL				
IPLF04-M5	IPLF06-M6	IPLF08-03	IPLF10-02	IPLF12-03
IPLF04-M6	IPLF06-M6	IPLF08-01	IPLF10-03	IPLF12-04
IPLF04-01	IPLF06-01	IPLF08-02	IPLF10-04	
IPLF04-02	IPLF06-02	IPLF08-03	IPLF12-02	

IPLN



MODEL				
IPLN04-M5	IPLN06-M6	IPLN08-02	IPLN10-04	IPLN14-04
IPLN04-M6	IPLN06-01	IPLN08-03	IPLN12-01	IPLN16-03
IPLN04-01	IPLN06-02	IPLN08-04	IPLN12-02	IPLN16-04
IPLN04-02	IPLN06-03	IPLN10-01	IPLN12-03	
IPLN04-03	IPLN06-04	IPLN10-02	IPLN12-04	
IPLN06-M5	IPLN08-01	IPLN10-03	IPLN14-03	

www.hidropaks.com.tr



IPX



MODEL				
IPX04-M5	IPX06-M5	IPX08-01	IPX10-02	IPX12-03
IPX04-M6	IPX06-M6	IPX08-02	IPX10-03	IPX12-04
IPX04-01	IPX06-01	IPX08-03	IPX10-04	
IPX04-02	IPX06-02	IPX08-04	IPX12-01	
IPX04-03	IPX06-03	IPX10-01	IPX12-02	

IPX-N



MODEL				
IPX5/32-N01	IPX1/4-N01	IPX5/16-N02	IPX3/8-N02	IPX1/2-N02
IPX5/32-N02	IPX1/4-N02	IPX5/16-N03	IPX3/8-N03	IPX1/2-N03
IPX3/16-N01	IPX1/4-N03	IPX5/16-N04	IPX3/8-N04	IPX1/2-N04
IPX3/16-N02	IPX5/16-N01	IPX3/8-N01	IPX1/2-N01	

IPKD



MODEL				
IPKD04-M5	IPKD06-M5	IPKD06-04	IPKD08-04	IPKD10-04
IPKD04-01	IPKD06-01	IPKD08-01	IPKD10-01	
IPKD04-02	IPKD06-02	IPKD08-02	IPKD10-02	
IPKD04-03	IPKD06-03	IPKD08-03	IPKD10-03	

IPLM



MODEL				
IPLM04	IPLM08	IPLM12		
IPLM06	IPLM10			

IPY



MODEL			MODEL	
IPY04	IPY16	IPY10-08	IPY5/32	IPY1/2
IPY06	IPY08-04	IPY12-08	IPY3/16	IPY3/16-5/32
IPY08	IPY08-04	IPY12-10	IPY1/4	IPY1/4-3/16
IPY10	IPY08-06		IPY5/16	IPY3/8-5/16
IPY12	IPY10-06		IPY3/8	IPY1/2-3/8

IPV



MODEL			MODEL	
IPV04	IPV10	IPV15	IPV5/32	IPV5/16
IPV06	IPV12	IPV16	IPV3/16	IPV3/8
IPV08	IPV14		IPV1/4	IPV1/2

IPE



MODEL				
IPE04	IPE12	IPE08-04-08	IPE10-08-10	IPE16-12-16
IPE06	IPE14	IPE08-04-08	IPE12-08-12	IPE16-14-16
IPE08	IPE15	IPE08-06-08	IPE12-10-12	
IPE10	IPE18	IPE10-06-10	IPE14-12-14	

MODEL				
IPE5/32	IPE5/16	IPE3/16-5/32-3/16	IPE3/8-5/16-3/8	
IPE3/16	IPE3/8	IPE1/4-3/16-1/4	IPE1/2-3/8-1/2	
IPE1/4	IPE1/2	IPE5/16-1/4-5/16		

IPU



MODEL				
IPU04	IPU12	IPU06-04	IPU10-08	IPU14-12
IPU06	IPU14	IPU08-04	IPU12-06	IPU16-12
IPU08	IPU15	IPU08-06	IPU12-08	IPU16-14
IPU10	IPU16	IPU10-06	IPU12-10	

MODEL				
IPU5/32	IPU5/16	IPU3/16-5/32	IPU3/8-5/16	
IPU3/16	IPU3/8	IPU1/4-3/16	IPU1/2-3/8	
IPU1/4	IPU1/2	IPU5/16-1/4		

IPZ



MODEL		MODEL	
IPZ04	IPZ10	IPZ5/32	IPZ3/8
IPZ06	IPZ12	IPZ1/4	IPZ1/2
IPZ08		IPZ5/16	

IPK



MODEL			MODEL	
IPK04	IPK10	IPK08-06	IPK3/16-5/32	IPK3/8-5/16
IPK06	IPK06-04	IPK10-06	IPK1/4-3/16	
IPK08	IPK08-04	IPK10-08	IPK5/16-1/4	



IPM



MODEL				
IPM04	IPM08	IPM12	IPM16	
IPM06	IPM10	IPM14		

IPMF



MODEL				
IPMF04-01	IPMF08-03	IPMF08-03	IPMF10-03	IPMF12-03
IPMF04-02	IPMF06-04	IPMF08-04	IPMF10-04	IPMF12-04
IPMF06-01	IPMF08-01	IPMF10-01	IPMF12-01	
IPMF06-02	IPMF08-02	IPMF10-02	IPMF12-02	

IPHF



MODEL				
IPHF04-M5	IPHF06-01	IPHF08-02	IPHF10-03	IPHF12-04
IPHF04-01	IPHF06-02	IPHF08-03	IPHF10-04	
IPHF04-02	IPHF06-03	IPHF08-04	IPHF12-02	
IPHF06-M5	IPHF08-01	IPHF10-02	IPHF12-03	

IPHF-N



MODEL				
IPHF5/32-N01	IPHF1/4-N01	IPHF5/16-N02	IPHF3/8-N03	IPHF1/2-N03
IPHF3/16-N01	IPHF1/4-N02	IPHF5/16-N03	IPHF3/8-N04	IPHF1/2-N04
IPHF3/16-N02	IPHF5/16-N01	IPHF3/8-N02	IPHF1/2-N02	

IPH



MODEL				
IPH04-M5	IPH06-01	IPH08-02	IPH10-02	IPH12-03
IPH04-01	IPH06-02	IPH08-03	IPH10-03	IPH12-04
IPH04-02	IPH06-03	IPH08-04	IPH10-04	
IPH06-M5	IPH08-01	IPH10-01	IPH12-02	

IPH-N

NPT



MODEL				
IPH5/32-N01	IPH1/4-N02	IPH5/16-N03	IPH3/8-N03	IPH1/2-N04
IPH3/16-N01	IPH1/4-N03	IPH5/16-N04	IPH3/8-N04	
IPH3/16-N02	IPH5/16-N01	IPH3/8-N01	IPH1/2-N02	
IPH1/4-N01	IPH5/16-N02	IPH3/8-N02	IPH1/2-N03	

IPHT(2)



MODEL				
IPHT04-01(2)	IPHT06-03(2)	IPHT08-04(2)	IPHT10-04(2)	
IPHT04-02(2)	IPHT08-01(2)	IPHT10-01(2)	IPHT12-02(2)	
IPHT06-01(2)	IPHT08-02(2)	IPHT10-02(2)	IPHT12-03(2)	
IPHT06-02(2)	IPHT08-03(2)	IPHT10-03(2)	IPHT12-04(2)	

IPHT(3)



MODEL				
IPHT04-01(3)	IPHT06-03(3)	IPHT08-04(3)	IPHT10-04(3)	
IPHT04-02(3)	IPHT08-01(3)	IPHT10-01(3)	IPHT12-02(3)	
IPHT06-01(3)	IPHT08-02(3)	IPHT10-02(3)	IPHT12-03(3)	
IPHT06-02(3)	IPHT08-03(3)	IPHT10-03(3)	IPHT12-04(3)	

PXG



MODEL
PXG06-04
PXG08
PXG08-04
PXG08-06

PXT



MODEL	
PXT04-01	PXT06-04
PXT04-02	PXT08-01
PXT06-01	PXT08-02
PXT06-02	PXT08-03
PXT06-03	PXT08-04

IPYJ



MODEL	
IPYJ04	IPYJ06-04
IPYJ06	IPYJ08-06
IPYJ08	IPYJ10-08
IPYJ10	IPYJ12-10
IPYJ12	

PXJ



MODEL	
PXJ04-04	PXJ10-04
PXJ06-04	PXJ10-06
PXJ08-04	PXJ10-08
PXJ08-06	
PXJ08-08	



IPLJ



MODEL	
IPLJ04	IPLJ06-04
IPLJ06	IPLJ08-06
IPLJ08	IPLJ10-08
IPLJ10	IPLJ12-10
IPLJ12	

IPDJ



MODEL	
IPDJ 04	IPDJ 06-04
IPDJ 06	IPDJ 08-06
IPDJ 08	IPDJ 10-08
IPDJ 10	IPDJ 12-10
IPDJ 12	

IPC-G



MODEL				
IPC04-G01	IPC06-G03	IPC08-G04	IPC12-G01	IPC14-G04
IPC04-G02	IPC06-G04	IPC10-G01	IPC12-G02	IPC15-G03
IPC04-G03	IPC08-G01	IPC10-G02	IPC12-G03	IPC15-G04
IPC06-G01	IPC08-G02	IPC10-G03	IPC12-G04	IPC16-G03
IPC06-G02	IPC08-G03	IPC10-G04	IPC14-G03	IPC16-G04

IPLJ45



MODEL	
IPLJ45 04	IPLJ45 06-04
IPLJ45 06	IPLJ45 08-06
IPLJ45 08	IPLJ45 10-08
IPLJ45 10	IPLJ45 12-10
IPLJ45 12	

IPBJ



MODEL	
IPBJ 04	IPBJ 06-04
IPBJ 06	IPBJ 08-06
IPBJ 08	IPBJ 10-08
IPBJ 10	IPBJ 12-10
IPBJ 12	

IPOC-G



MODEL				
IPOC04-G01	IPOC06-G03	IPOC08-G03	IPOC10-G03	IPOC12-G03
IPOC04-G02	IPOC06-G04	IPOC08-G04	IPOC10-G04	IPOC12-G04
IPOC06-G01	IPOC08-G01	IPOC10-G01	IPOC12-G01	
IPOC06-G02	IPOC08-G02	IPOC10-G02	IPOC12-G02	

IPKJ



MODEL	
IPKJ04	IPKJ08-04
IPKJ06	IPKJ08-06
IPKJ08	IPKJ10-06
IPKJ10	IPKJ10-08
IPKJ06-04	

IPGJ



MODEL	MODEL
IPGJ06-04	IPGJ10-08
IPGJ08-04	IPGJ12-08
IPGJ08-06	IPGJ12-08
IPGJ10-06	IPGJ12-10

IPCF-G



MODEL				
IPCF04-G01	IPCF06-G02	IPCF08-G02	IPCF10-G02	IPCF12-G02
IPCF04-G02	IPCF06-G03	IPCF08-G03	IPCF10-G03	IPCF12-G03
IPCF04-G03	IPCF08-G04	IPCF08-G04	IPCF10-G04	IPCF12-G04
IPCF06-G01	IPCF08-G01	IPCF10-G01	IPCF12-G01	

IPP



MODEL	
IPP04	
IPP06	
IPP08	
IPP10	
IPP12	

PPF



MODEL	
PPF-04	
PPF-06	
PPF-07	
PPF-08	
PPF-10	
PPF-12	

IPB-G



MODEL				
IPB04-G01	IPB06-G03	IPB08-G04	IPB12-G01	IPB14-G04
IPB04-G02	IPB08-G04	IPB10-G01	IPB12-G02	IPB15-G03
IPB04-G03	IPB08-G01	IPB10-G02	IPB12-G03	IPB15-G04
IPB06-G01	IPB08-G02	IPB10-G03	IPB12-G04	IPB16-G03
IPB06-G02	IPB08-G03	IPB10-G04	IPB14-G03	IPB16-G04

PGT

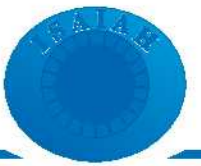


MODEL	
PGT04-01	
PGT06-01	
PGT06-02	
PGT08-01	
PGT08-02	
PGT10-02	

IPD-G



MODEL				
IPD04-G01	IPD06-G04	IPD10-G01	IPD12-G02	IPD15-G03
IPD04-G02	IPD08-G01	IPD10-G02	IPD12-G03	IPD15-G04
IPD06-G01	IPD08-G02	IPD10-G03	IPD12-G04	IPD16-G03
IPD06-G02	IPD08-G03	IPD10-G04	IPD14-G03	IPD16-G04
IPD06-G03	IPD08-G04	IPD12-G01	IPD14-G04	



IPL-G



MODEL				
IPL04-G01	IPL06-G04	IPL10-G01	IPL12-G02	IPL15-G03
IPL04-G02	IPL08-G01	IPL10-G02	IPL12-G03	IPL15-G04
IPL08-G01	IPL08-G02	IPL10-G03	IPL12-G04	IPL16-G03
IPL06-G02	IPL08-G03	IPL10-G04	IPL14-G03	IPL16-G04
IPL06-G03	IPL08-G04	IPL12-G01	IPL14-G04	

IPLL-G



MODEL				
IPLL04-G01	IPLL06-G03	IPLL08-G03	IPLL10-G03	IPLL12-G03
IPLL04-G02	IPLL06-G04	IPLL08-G04	IPLL10-G04	IPLL12-G04
IPLL08-G01	IPLL08-G01	IPLL10-G01	IPLL12-G01	
IPLL06-G02	IPLL08-G02	IPLL10-G02	IPLL12-G02	

IPL45-G



MODEL				
IPL45 04-G01	IPL45 06-G02	IPL45 08-G02	IPL45 10-G02	IPL45 12-G02
IPL45 04-G02	IPL45 06-G03	IPL45 08-G03	IPL45 10-G03	IPL45 12-G03
IPL45 04-G03	IPL45 06-G04	IPL45 08-G04	IPL45 10-G04	IPL45 12-G04
IPL45 06-G01	IPL45 08-G01	IPL45 10-G01	IPL45 12-G01	

IPHT-G(2)



MODEL			
IPHT04-G01(2)	IPHT06-G03(2)	IPHT08-G04(2)	IPHT10-G04(2)
IPHT04-G02(2)	IPHT08-G01(2)	IPHT10-G01(2)	IPHT12-G02(2)
IPHT06-G01(2)	IPHT08-G02(2)	IPHT10-G02(2)	IPHT12-G03(2)
IPHT06-G02(2)	IPHT08-G03(2)	IPHT10-G03(2)	IPHT12-G04(2)

IPHT-G(3)



MODEL			
IPHT04-G01(3)	IPHT06-G03(3)	IPHT08-G04(3)	IPHT10-G04(3)
IPHT04-G02(3)	IPHT08-G01(3)	IPHT10-G01(3)	IPHT12-G02(3)
IPHT06-G01(3)	IPHT08-G02(3)	IPHT10-G02(3)	IPHT12-G03(3)
IPHT06-G02(3)	IPHT08-G03(3)	IPHT10-G03(3)	IPHT12-G04(3)

IPLN-G



MODEL				
IPLN04-G01	IPLN06-G03	IPLN08-G04	IPLN12-G01	IPLN14-G04
IPLN04-G02	IPLN06-G04	IPLN10-G01	IPLN12-G02	IPLN16-G03
IPLN04-G03	IPLN08-G01	IPLN10-G02	IPLN12-G03	IPLN16-G04
IPLN06-G01	IPLN08-G02	IPLN10-G03	IPLN12-G04	
IPLN06-G02	IPLN08-G03	IPLN10-G04	IPLN14-G03	

IPX-G



MODEL				
IPX04-G01	IPX06-G02	IPX08-G02	IPX10-G02	IPX12-G02
IPX04-G02	IPX06-G03	IPX08-G03	IPX10-G03	IPX12-G03
IPX04-G03	IPX06-G04	IPX08-G04	IPX10-G04	IPX12-G04
IPX06-G01	IPX08-G01	IPX10-G01	IPX12-G01	

IPKD-G



MODEL				
IPKD04-G01	IPKD06-G03	IPKD08-G03	IPKD10-G03	
IPKD04-G02	IPKD06-G04	IPKD08-G04	IPKD10-G04	
IPKD06-G01	IPKD08-G01	IPKD10-G01		
IPKD06-G02	IPKD08-G02	IPKD10-G02		

IPHF-G



MODEL				
IPHF04-G01	IPHF06-G03	IPHF08-G03	IPHF10-G03	IPHF12-G04
IPHF04-G02	IPHF08-G04	IPHF08-G04	IPHF10-G04	
IPHF06-G01	IPHF08-G01	IPHF10-G01	IPHF12-G02	
IPHF06-G02	IPHF08-G02	IPHF10-G02	IPHF12-G03	

IPH-G



MODEL				
IPH04-G01	IPH06-G03	IPH08-G03	IPH10-G03	IPH12-G04
IPH04-G02	IPH06-G04	IPH08-G04	IPH10-G04	
IPH06-G01	IPH08-G01	IPH10-G01	IPH12-G02	
IPH06-G02	IPH08-G02	IPH10-G02	IPH12-G03	

PXT-G



MODEL
PXT04-G01
PXT04-G02
PXT06-G01
PXT06-G02
PXT06-G03
PXT06-G04
PXT08-G01
PXT08-G02
PXT08-G03
PXT08-G04

PGT-G



MODEL
PGT04-G01
PGT06-G01
PGT06-G02
PGT08-G01
PGT08-G02
PGT10-G02



FEATURES

- Used to control the speed of the working equipment
- Because of the resin body and metal body rotation lead to the direction is free.

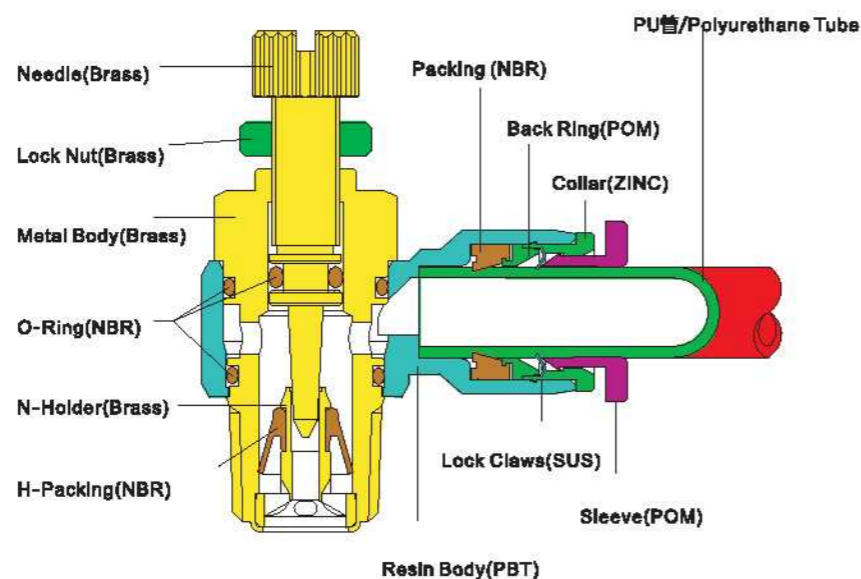
WARNING

When the needle opened slowly from the "completely closed", it is dangerous because the actuator may be sudden "come out" while adjusting of the needle. In case of it is opened, it should be operating in secure, Clockwise to "off", counterclockwise to "on". Don't swing or rotate the products forcibly, it may result in damage or cause leakage.

NOTE

To a certain extent, the few air leakage of Speed Control is allowed when it is in a completely closed situation because of its design, Please don't use it in the environment required no air leakage.

STRUCTURE CHART



SPECIFICATIONS

流体/Fluid	/Air(no other gases or liquids)	
压力范畴/Operating Pressure	0~150psi	0~9.9kgf/cm ² (0~990kpa)
真空度/Negative Pressure	7.5psi	0.5kgf/cm ² (20kpa)
温度范畴/Operating Temperature	32~140°F	0~60°C
软管/Applicable Tube	Polyurethane and Nylon	

CONTROL WAY

/Type	'Exhaust Control out	Entering air Control in
/Type		
	ISC06-01	ISC06-01B

When you order control in type, please put B at the end of model type. For example, ISC06-01B.



ISC



MODEL				
ISC04-M5(B)	ISC06-02(B)	ISC08-02(B)	ISC10-03(B)	ISC12-04(B)
ISC04-01(B)	ISC06-03(B)	ISC08-03(B)	ISC10-04(B)	
ISC04-02(B)	ISC06-04(B)	ISC08-04(B)	ISC12-01(B)	
ISC06-M5(B)	ISC08-M5(B)	ISC10-01(B)	ISC12-02(B)	
ISC06-01(B)	ISC08-01(B)	ISC10-02(B)	ISC12-03(B)	

ISC-N



MODEL				
ISC5/32-U10(B)	ISC1/4-U10(B)	ISC5/16-N01(B)	ISC3/8-N02(B)	ISC1/2-N04(B)
ISC5/32-N01(B)	ISC1/4-N01(B)	ISC5/16-N02(B)	ISC3/8-N03(B)	
ISC3/16-U10(B)	ISC1/4-N02(B)	ISC5/16-N03(B)	ISC3/8-N04(B)	
ISC3/16-N01(B)	ISC1/4-N03(B)	ISC5/16-N04(B)	ISC1/2-N02(B)	
ISC3/16-N02(B)	ISC1/4-N04(B)	ISC3/8-N01(B)	ISC1/2-N03(B)	

ISC-G



MODEL				
ISC04-G01(B)	ISC06-G03(B)	ISC08-G03(B)	ISC10-G03(B)	ISC12-G03(B)
ISC04-G02(B)	ISC06-G04(B)	ISC08-G04(B)	ISC10-G04(B)	ISC12-G04(B)
ISC06-G01(B)	ISC08-G01(B)	ISC10-G01(B)	ISC12-G01(B)	
ISC06-G02(B)	ISC08-G02(B)	ISC10-G02(B)	ISC12-G02(B)	

ISS



MODEL				
ISS04-M5(B)	ISS06-M5(B)	ISS08-01(B)	ISS10-03(B)	
ISS04-01(B)	ISS08-01(B)	ISS08-02(B)	ISS12-02(B)	
ISS04-02(B)	ISS06-02(B)	ISS10-02(B)	ISS12-03(B)	

MODEL				
ISS1/4-N01(B)	ISS5/16-N01(B)	ISS3/8-N02(B)	ISS1/2-N02(B)	
ISS1/4-N02(B)	ISS5/16-N02(B)	ISS3/8-N03(B)	ISS1/2-N03(B)	

ISS-G



MODEL				
ISS04-G01(B)	ISS06-G01(B)	ISS08-G01(B)	ISS10-G02(B)	ISS12-G02(B)
ISS04-G02(B)	ISS06-G02(B)	ISS08-G02(B)	ISS10-G03(B)	ISS12-G03(B)



ISU



MODEL			
ISU04	ISU10	ISU3/16	ISU3/8
ISU06	ISU12	ISU1/4	ISU1/2
ISU08	ISU5/32	ISU5/16	

ISCA



MODEL				
ISCA04-M5(B)	ISCA06-01(B)	ISCA08-01(B)	ISCA10-01(B)	ISCA12-02(B)
ISCA04-01(B)	ISCA06-02(B)	ISCA08-02(B)	ISCA10-02(B)	ISCA12-03(B)
ISCA04-02(B)	ISCA06-03(B)	ISCA08-03(B)	ISCA10-03(B)	ISCA12-04(B)
ISCA06-M5(B)	ISCA06-04(B)	ISCA08-04(B)	ISCA10-04(B)	

ISCA-G



MODEL				
ISCA04-G01(B)	ISCA06-G03(B)	ISCA08-G03(B)	ISCA10-G03(B)	ISCA12-G04(B)
ISCA04-G02(B)	ISCA06-G04(B)	ISCA08-G04(B)	ISCA10-G04(B)	
ISCA06-G01(B)	ISCA08-G01(B)	ISCA10-G01(B)	ISCA12-G02(B)	
ISCA06-G02(B)	ISCA08-G02(B)	ISCA10-G02(B)	ISCA12-G03(B)	

ISCD

Large flow



MODEL		
ISCD04-M5	ISCD06-01	ISCD08-01
ISCD06-M5	ISCD06-02	ISCD08-02

ISCD-G

Large flow-G



MODEL		
ISCD06-G01	ISCD08-G01	
ISCD06-G02	ISCD08-G02	

APPLICATIONS

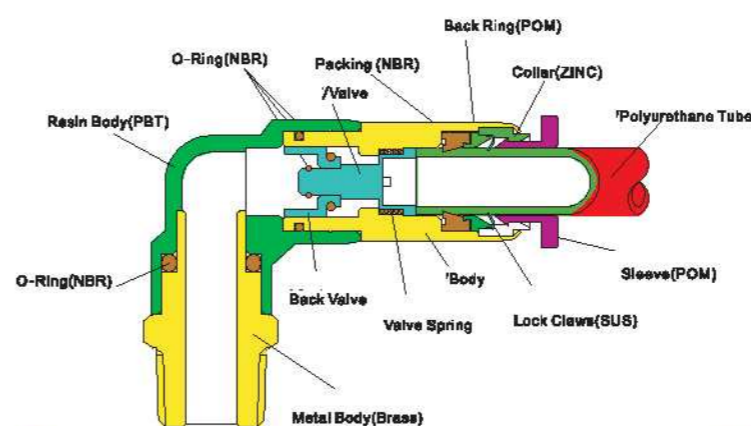
Used in the place where tube frequently changes.

FEATURES

Air flows is stopped from the tube if it is released, the air flows again only after the tube is connected.

STRUCTURE CHART

Symbol as follows:



SPECIFICATIONS

Fluid	Air (no other gases or liquids)	
Operating Pressure	0~150psi	0~9.9kgf/cm ² (0~990kpa)
Negative Pressure	-29.5in Hg	-750mm Hg
Operating Temperature	32~140°F	0~60°C
Applicable Tube	Polyurethane and Nylon	

ISPC



MODEL	
ISPC 04-01	ISPC 10-02
ISPC 06-01	ISPC 10-03
ISPC 06-02	ISPC 10-04
ISPC 08-01	ISPC 12-02
ISPC 08-02	ISPC 12-03
ISPC 08-03	ISPC 12-04

ISPU



MODEL	
ISPU 04	ISPU 10
ISPU 06	ISPU 12
ISPU 08	

ISPL-G



MODEL			
ISPL04-G01	ISPL08-G01	ISPL10-G02	ISPL12-G02
ISPL06-G01	ISPL08-G02	ISPL10-G03	ISPL12-G03
ISPL08-G02	ISPL08-G03	ISPL10-G04	ISPL12-G04

ISPL



MODEL	
ISPL 04-M5	ISPL 08-02
ISPL 04-M6	ISPL 08-03
ISPL 04-01	ISPL 10-02
ISPL 08-M5	ISPL 10-03
ISPL 06-M6	ISPL 10-04
ISPL 06-01	ISPL 12-02
ISPL 06-02	ISPL 12-03
ISPL 08-01	ISPL 12-04

ISPC-G



MODEL	
ISPC04-G01	ISPC10-G02
ISPC06-G01	ISPC10-G03
ISPC06-G02	ISPC10-G04
ISPC08-G01	ISPC12-G02
ISPC08-G02	ISPC12-G03
ISPC08-G03	ISPC12-G04



APPLICATIONS

- Check valves permit airflow in one direction.

FEATURES

- Specifications: allow the airflow in one direction but stops in the reverse direction.

NOTE

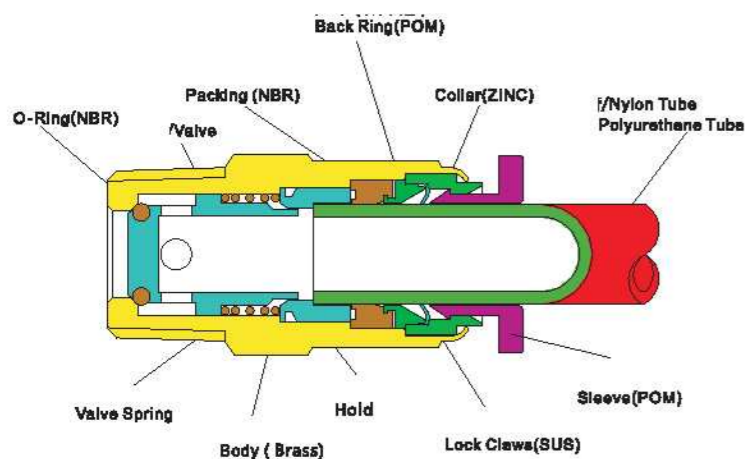
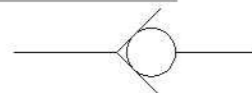
- Tight the thread according to the rule. It won't work if too tight.



Fluid	Air(no other gases or liquids)	
Operating Pressure	0~150psi	0~9.9kgf/cm ² (0~990kpa)
Negative Pressure	-29.5in Hg	-750mm Hg
Operating Temperature	32~140°F	0~60°C
Applicable Tube	Polyurethane and Nylon	

STRUCTURE CHART

Symbol as follows:



CONTROL METHOD

Type	Meter IN	Meter OUT
Air Flow	Thread to Tube	Tube to thread
PCVC		
PCVF		

IPCVC



MODEL	
IPCVC 04-M5(B)	IPCVC 08-02(B)
IPCVC 04-M6(B)	IPCVC 10-03(B)
IPCVC 04-01(B)	IPCVC 10-04(B)
IPCVC 06-01(B)	IPCVC 12-03(B)
IPCVC 06-02(B)	IPCVC 12-04(B)
IPCVC 08-01(B)	

IPCVF



MODEL	
IPCVF 01-01(B)	
IPCVF 02-02(B)	
IPCVF 03-03(B)	
IPCVF 04-04(B)	

IPCVCU



MODEL	
IPCVCU 04	
IPCVCU 06	
IPCVCU 08	
IPCVCU 10	
IPCVCU 12	

IPCVC-G



MODEL	
IPCVC04-G01(B)	IPCVC10-G03(B)
IPCVC06-G01(B)	IPCVC10-G04(B)
IPCVC08-G02(B)	IPCVC12-G03(B)
IPCVC08-G01(B)	IPCVC12-G04(B)
IPCVC08-G02(B)	

IPCVF-G



MODEL	
IPCVF 01-G01(B)	
IPCVF 02-G02(B)	
IPCVF 03-G03(B)	
IPCVF 04-G04(B)	

APPLICATION

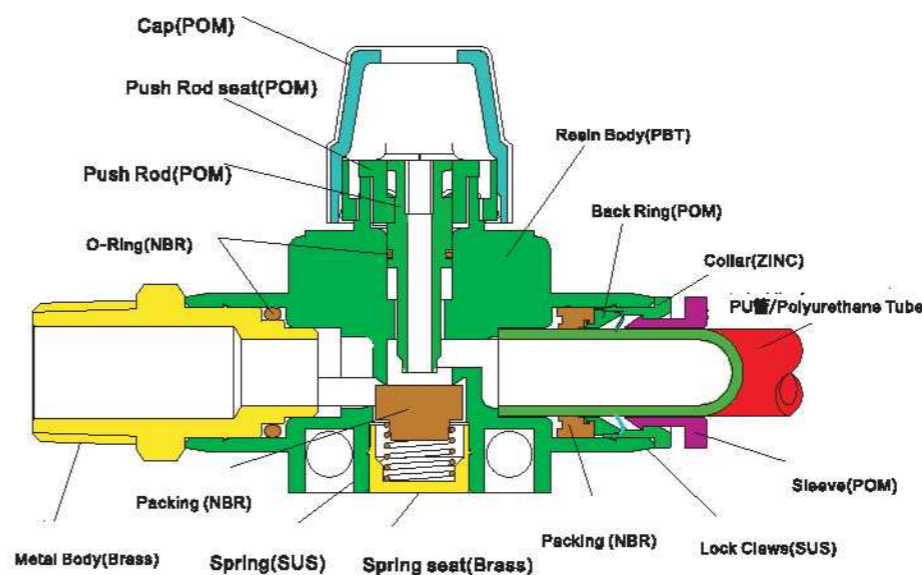
- Used for turning air pressure on and off for pneumatic devices.

FEATURE

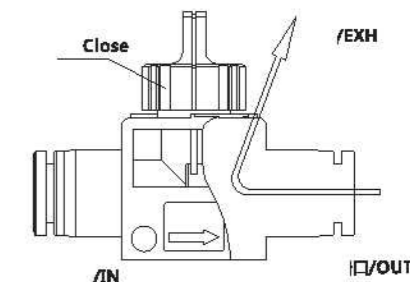
- The three-way valve, when the air is stopped, discharges residual pressure to the outlet, which assures safety in repairing or adjusting connected devices.
- The two-way valve dose not discharge residual pressure.
- There are four types of hand valves for choosing.



STRUCTURE CHART



Three-way valves



The three-way valve, when the air is stopped, discharges residual pressure to the outlet, which assures safety in repairing or adjusting connected devices.
The two-way valve dose not discharge residual pressure, and suitable for the tank or other device that does not require a discharging residual pressure.

二/TWO WAY
BLANK : 三通/THREE WAY

When you order Two-Way hand valve, please put B after model type, For example: HVFF06-06B.

SPECIFICATIONS

流体Fluid	/Air(no other gases or liquids)	
压力范围/Operating Pressure	0~150psi	0~9.9kgf/cm ² (0~990kpa)
Negative Pressure	-29.5in Hg	-750mm Hg
温度范围/Operating Temperature	32~140°F	0~60°C
适用管/Applicable Tube	Polyurethane and Nylon	



HVFF



MODEL			
HVFF 06-06(B)	HVFF 08-08(B)	HVFF 10-10(B)	HVFF 12-12(B)
HVFF 08-06(B)	HVFF 10-08(B)	HVFF 12-10(B)	

HVFS



MODEL			
HVFS 06-01(B)	HVFS 08-01(B)	HVFS 10-02(B)	HVFS 12-02(B)
HVFS 06-02(B)	HVFS 08-02(B)	HVFS10-03(B)	HVFS12-03(B)
HVFS 06-03(B)	HVFS 08-03(B)	HVFS 10-04(B)	HVFS 12-04(B)

HVFS-G



MODEL			
HVFS 06-G01(B)	HVFS 08-G01(B)	HVFS 10-G02(B)	HVFS 12-G02(B)
HVFS 06-G02(B)	HVFS 08-G02(B)	HVFS 10-G03(B)	HVFS 12-G03(B)
HVFS 06-G03(B)	HVFS 08-G03(B)	HVFS 10-G04(B)	HVFS 12-G04(B)

HVSS



MODEL			
HVSS 01-01(B)	HVSS 02-02(B)	HVSS 03-03(B)	HVSS 04-04(B)
HVSS 02-01(B)	HVSS 03-02(B)	HVSS 04-03(B)	

HVSS-G



MODEL			
HVSS G01-G01(B)	HVSS G02-G02(B)	HVSS G03-G03(B)	HVSS G04-G04(B)
HVSS G02-G01(B)	HVSS G03-G02(B)	HVSS G04-G03(B)	

HVSF



MODEL			
HVSF 01-06(B)	HVSF 01-08(B)	HVSF02-10(B)	HVSF02-12(B)
HVSF 02-06(B)	HVSF 02-08(B)	HVSF 03-10(B)	HVSF 03-12(B)
HVSF 03-08(B)	HVSF03-08(B)	HVSF 04-10(B)	HVSF 04-12(B)

HVSF-G



MODEL			
HVSF G01-06(B)	HVSF G01-08(B)	HVSF G02-10(B)	HVSF G02-12(B)
HVSF G02-06(B)	HVSF G02-08(B)	HVSF G03-10(B)	HVSF G03-12(B)
HVSF G03-08(B)	HVSF G03-08(B)	HVSF G04-10(B)	HVSF G04-12(B)

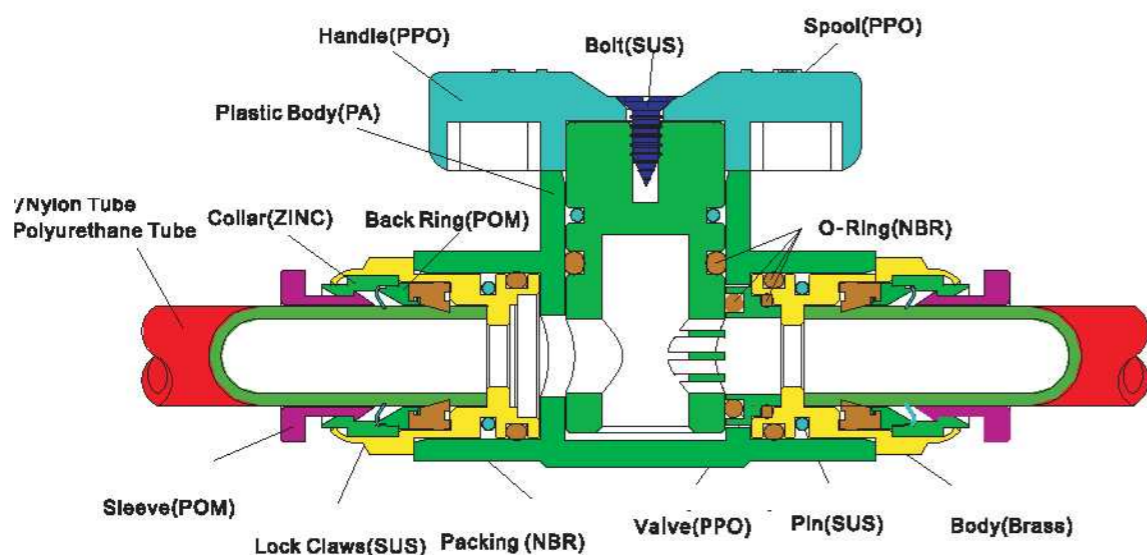
www.hidropeaks.com.tr



APPLICATION

- Used for turning air pressure on and off for pneumatic devices.

STRUCTURE CHART



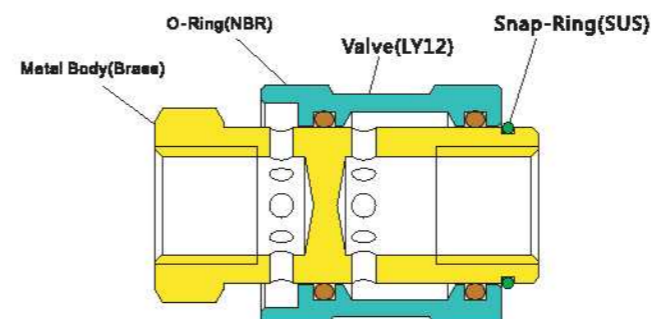
APPLICATION

- Used for turning air pressure on and off for pneumatic devices.

FEATURE

- Made of brass or aluminum for a long life-span.

STRUCTURE CHART



MODE TYPE

ISV - 01 - SS

Hand Sliding Fittings

Female-male(standard type)
Male-Male
Female-Female
Male-Female

Thread Size
01=1/8"
02=1/4"
03=3/8"
04=1/2"

MODEL	
ISV 01	ISV 03
ISV 02	ISV 04

BVU



MODEL	
BVU06	BVU08-06
BVU08	

BVC



MODEL	
BVC06-01	BVC08-01
BVC06-02	BVC08-02
BVC06-03	BVC08-03

BVC-G



MODEL	
BVC06-G01	BVC08-G01
BVC06-G02	BVC08-G02
BVC06-G03	BVC08-G03

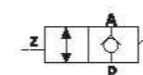
AIR CONTROL VALVE(QKF)

SPECIFICATION

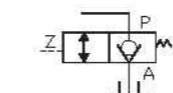
- The pressure can be kept safe of return circuit.
- Prevent the cylinder work itself after it goes out of work.
- The position accurate once the cylinder work off.
- The special design and application of return circuit.



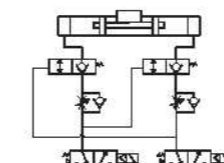
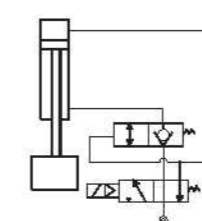
Symbol



Accurate positioning



Pressure maintenance



QKF Air control valve

MODEL
QKF06-01
QKF06-02
QKF08-01
QKF08-02

QKF-G Air control valve-G thread

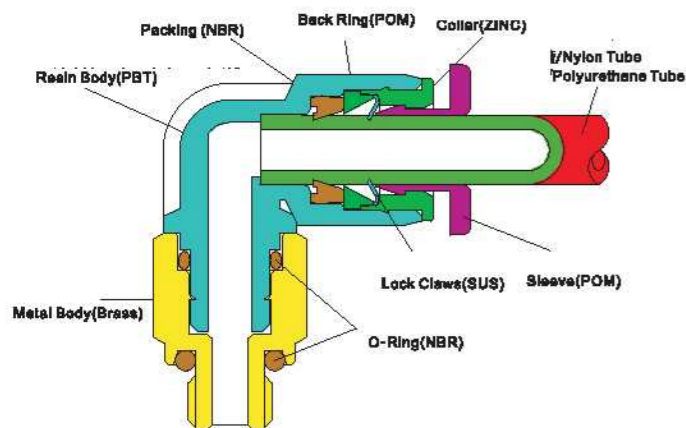
MODEL
QKF06-G01
QKF06-G02
QKF08-G01
QKF08-G02



FEATURES

- The compact fittings used to the pneumatic tube system.
- The volume is 40% smaller than the standard pneumatic fittings.
- The small and oval sleeve is easy to push in and pull out the tube.

STRUCTURE CHART



METRIC-BSPT(R)

PC	-	06	-	01	-	C
Compact one touch fitting		Tube Dia 规格/Code 尺寸/Size 03 Φ03 04 Φ04 06 Φ06		Thread Size 公制螺纹/Metric Thread 规格/Code 尺寸/Size M3 M3X0.5 M5 M5X0.8 M6 M6X1.0 锥螺纹/R (PT) Thread 型号/Code 尺寸/Size 01 R1/8		Compact Nickel

Note: we can make other smaller thread.

SPECIFICATIONS

流体/Fluid	/Air (No other gases or liquids)	
工作压力/Operating Pressure	0~150psi	0~9.9kgf/cm ² (0~990kpa)
Negative Pressure	-29.5in Hg	-750mm Hg
温度范围/Operating Temperature	32~140°F	0~60°C
适用管/Applicable Tube	Polyurethane and Nylon	

PC-C



MODEL				
PC03-M3C	PC03-G01C	PC04-01C	PC06-M5C	PC06-G02C
PC03-M5C	PC04-M3C	PC04-G01C	PC06-M6C	
PC03-M6C	PC04-M5C	PC04-G02C	PC06-01C	
PC03-01C	PC04-M6C	PC06-M3C	PC06-G01C	

POC-C



MODEL				
POC03-M3C	POC04-M3C	POC04-G01C	POC06-M6C	
POC03-M5C	POC04-M5C	POC04-G02C	POC06-01C	
POC03-M6C	POC04-M6C	POC06-M3C	POC06-G01C	
POC03-G01C	POC04-01C	POC06-M5C	POC06-G02C	

PL-C



MODEL				
PL03-M3C	PL03-G01C	PL04-01C	PL06-M6C	
PL03-M5C	PL04-M3C	PL04-G01C	PL06-01C	
PL03-M6C	PL04-M5C	PL04-G02C	PL06-G01C	
PL03-01C	PL04-M6C	PL06-M5C	PL06-G02C	

PLL-C



MODEL				
PLL03-M3C	PLL03-G01C	PLL04-01C	PLL06-M6C	
PLL03-M5C	PLL04-M3C	PLL04-G01C	PLL06-01C	
PLL03-M6C	PLL04-M5C	PLL04-G02C	PLL06-G01C	
PLL03-01C	PLL04-M6C	PLL06-M5C	PLL06-G02C	

PB-C



MODEL				
PB03-M3C	PB03-G01C	PB04-01C	PB06-M6C	
PB03-M5C	PB04-M3C	PB04-G01C	PB06-01C	
PB03-M6C	PB04-M5C	PB04-G02C	PB06-G01C	
PB03-01C	PB04-M6C	PB06-M5C	PB06-G02C	

PD-C



MODEL				
PD03-M3C	PD03-G01C	PD04-01C	PD06-M6C	
PD03-M5C	PD04-M3C	PD04-G01C	PD06-01C	
PD03-M6C	PD04-M5C	PD04-G02C	PD06-G01C	
PD03-01C	PD04-M6C	PD06-M5C	PD06-G02C	

PV-C



MODEL
PV03C
PV04C
PV06C

PU-C



MODEL
PU03C
PU04C
PU06C

PE-C



MODEL
PE03C
PE04C
PE06C

PY-C



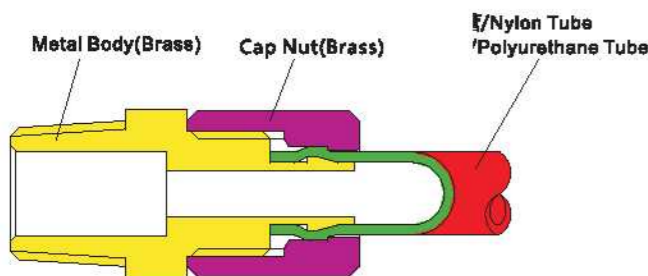
MODEL
PY03C
PY04C
PY06C
PY06-04C



FEATURES

- The Mini Fittings have the small installation space.
- The Mini Fittings are used in Nylon Tube extensively and are able to bear high pressure.

STRUCTURE CHART



METRIC-BSPT(R)

TC Two Touch Fitting	04	01
Tube Dia 规格		Thread Size 公制螺纹/Metric Thread 规格/Code 型号/Size
Code	0.D 1.D	
04	Φ04 Φ2.5	M3 M3X0.5
06	Φ06 Φ4	M5 M5X0.8
08	Φ08 Φ5.5	M6 M6X1
		01 R1/8

SPECIFICATIONS

流体/Fluid	/Air (no other gases or liquids)	
压力范围/Operating Pressure	0~150psl	0~9.9kgf/cm ² (0~990kpa)
负压力/Negative Pressure	-29.5in Hg	-750mm Hg
温度范围/Operating Temperature	32~140°F	0~60°C
软管/Applicable Tube	/Polyurethane and Nylon	

TC



MODEL	
TC03-M3	TC04-G01
TC03-M5	TC06-M5
TC04-M3	TC06-M6
TC04-M5	TC06-G01
TC04-M6	

TL



MODEL	
TL03-M5	TL04-G01
TL04-M3	TL06-M5
TL04-M5	TL06-M6
TL04-M6	TL06-G01

PTC



MODEL
PTC06-01
PTC06-02
PTC08-01
PTC08-02

PTL



MODEL
PTL06-01
PTL06-02
PTL08-01
PTL08-02

FS



MODEL
FS-06
FS-08

FEATURES

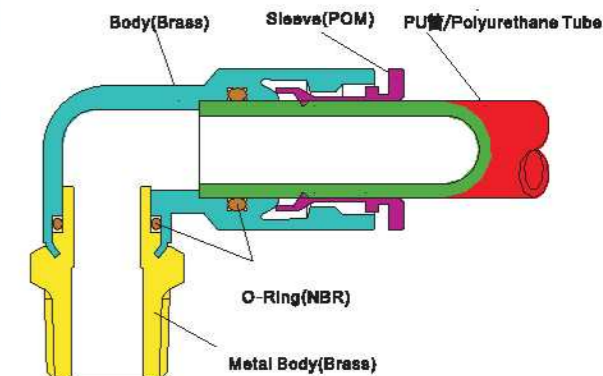
- It's made of copper pneumatic piping joints.
- Not only the body but also the sleeve, both of them are made from copper, which is good for flame resistance, heat resistance and splash performance.



SPECIFICATIONS

Operating Temperature	-20~+80°C
Operating Pressure	0-1.0MPa
Fluid	/Air, Vacuum
Applicable Tube	/Polyurethane and Nylon

STRUCTURE CHART



IPCT



MODEL				
IPCT04-M5	IPCT06-01	IPCT08-01	IPCT10-01	IPCT12-02
IPCT04-01	IPCT06-02	IPCT08-02	IPCT10-02	IPCT12-03
IPCT04-02	IPCT06-03	IPCT08-03	IPCT10-03	IPCT12-04
IPCT06-M5	IPCT06-04	IPCT08-04	IPCT10-04	

IPCFT



MODEL				
IPCFT04-M5	IPCFT06-01	IPCFT08-01	IPCFT10-01	IPCFT12-02
IPCFT04-01	IPCFT06-02	IPCFT08-02	IPCFT10-02	IPCFT12-03
IPCFT04-02	IPCFT06-03	IPCFT08-03	IPCFT10-03	IPCFT12-04
IPCFT06-M5	IPCFT06-04	IPCFT08-04	IPCFT10-04	

IPLT



MODEL				
IPLT04-M5	IPLT06-M6	IPLT08-01	IPLT10-02	IPLT12-04
IPLT04-M6	IPLT06-01	IPLT08-02	IPLT10-03	
IPLT04-01	IPLT06-02	IPLT08-03	IPLT10-04	
IPLT04-02	IPLT06-03	IPLT08-04	IPLT12-02	
IPLT06-M5	IPLT06-04	IPLT10-01	IPLT12-03	



IPBT



MODEL				
IPBT04-M5	IPBT06-01	IPBT08-01	IPBT10-01	IPBT12-02
IPBT04-01	IPBT06-02	IPBT08-02	IPBT10-02	IPBT12-03
IPBT04-02	IPBT08-03	IPBT08-03	IPBT10-03	IPBT12-04
IPBT06-M5	IPBT06-04	IPBT08-04	IPBT10-04	

IPDT



MODEL				
IPDT04-M5	IPDT06-01	IPDT08-01	IPDT10-01	IPDT12-02
IPDT04-01	IPDT06-02	IPDT08-02	IPDT10-02	IPDT12-03
IPDT04-02	IPDT06-03	IPDT08-03	IPDT10-03	IPDT12-04
IPDT06-M5	IPDT06-04	IPDT08-04	IPDT10-04	

IPHT



MODEL				
IPHT04-01	IPHT06-02	IPHT08-02	IPHT10-01	IPHT10-04
IPHT04-02	IPHT06-03	IPHT08-03	IPHT10-02	
IPHT06-01	IPHT08-01	IPHT08-04	IPHT10-03	

ISCT



MODEL				
ISCT04-01	ISCT06-02	ISCT08-02	ISCT10-01	ISCT10-04
ISCT04-02	ISCT06-03	ISCT08-03	ISCT10-02	
ISCT06-01	ISCT08-01	ISCT08-04	ISCT10-03	

IPMFT



MODEL				
IPMFT04-01	IPMFT06-03	IPMFT08-04	IPMFT10-04	
IPMFT04-02	IPMFT08-01	IPMFT10-01	IPMFT12-02	
IPMFT06-01	IPMFT08-02	IPMFT10-02	IPMFT12-03	
IPMFT06-02	IPMFT08-03	IPMFT10-03	IPMFT12-04	

IPCT-G



MODEL				
IPCT04-G01	IPCT06-G03	IPCT08-G03	IPCT10-G03	IPCT12-G04
IPCT04-G02	IPCT06-G04	IPCT08-G04	IPCT10-G04	
IPCT06-G01	IPCT08-G01	IPCT10-G01	IPCT12-G02	
IPCT06-G02	IPCT08-G02	IPCT10-G02	IPCT12-G03	

IPCFT-G



MODEL				
IPCFT04-G01	IPCFT06-G03	IPCFT08-G03	IPCFT10-G03	IPCFT12-G04
IPCFT04-G02	IPCFT06-G04	IPCFT08-G04	IPCFT10-G04	
IPCFT06-G01	IPCFT08-G01	IPCFT10-G01	IPCFT12-G02	
IPCFT06-G02	IPCFT08-G02	IPCFT10-G02	IPCFT12-G03	

IPLT-G



MODEL				
IPLT04-G01	IPLT06-G03	IPLT08-G03	IPLT10-G03	IPLT12-G04
IPLT04-G02	IPLT06-G04	IPLT08-G04	IPLT10-G04	
IPLT06-G01	IPLT08-G01	IPLT10-G01	IPLT12-G02	
IPLT06-G02	IPLT08-G02	IPLT10-G02	IPLT12-G03	

IPBT-G



MODEL				
IPBT04-G01	IPBT06-G03	IPBT08-G03	IPBT10-G03	IPBT12-G04
IPBT04-G02	IPBT06-G04	IPBT08-G04	IPBT10-G04	
IPBT06-G01	IPBT08-G01	IPBT10-G01	IPBT12-G02	
IPBT06-G02	IPBT08-G02	IPBT10-G02	IPBT12-G03	

IPDT-G



MODEL				
IPDT04-G01	IPDT06-G03	IPDT08-G03	IPDT10-G03	IPDT12-G04
IPDT04-G02	IPDT06-G04	IPDT08-G04	IPDT10-G04	
IPDT06-G01	IPDT08-G01	IPDT10-G01	IPDT12-G02	
IPDT06-G02	IPDT08-G02	IPDT10-G02	IPDT12-G03	

www.hidropaks.com.tr



IPHT-G



MODEL				
IPHT04-M5	IPHT06-M5	IPHT08-G03	IPHT08-G03	IPHT10-G02
IPHT04-G01	IPHT06-G01	IPHT08-G01	IPHT08-G04	IPHT10-G03
IPHT04-G02	IPHT06-G02	IPHT08-G02	IPHT10-G01	IPHT10-G04

ISCT-G



MODEL				
ISCT04-M5	ISCT06-M5	ISCT06-G03	ISCT08-G03	ISCT10-G02
ISCT04-G01	ISCT06-G01	ISCT08-G01	ISCT08-G04	ISCT10-G03
ISCT04-G02	ISCT06-G02	ISCT08-G02	ISCT10-G01	ISCT10-G04

IPUT



MODEL	
IPUT 04	IPUT06-04
IPUT 06	IPUT08-06
IPUT 08	IPUT10-08
IPUT 10	IPUT12-10
IPUT 12	

IPVT



MODEL
IPVT 04
IPVT 06
IPVT 08
IPVT 10
IPVT 12

IPET



MODEL
IPET 04
IPET 06
IPET 08
IPET 10
IPET 12

IPZT



MODEL
IPZT 04
IPZT 06
IPZT 08
IPZT 10
IPZT 12

IPMT



MODEL
IPMT 04
IPMT 06
IPMT 08
IPMT 10
IPMT 12

IPGJT



MODEL
IPGJT06-04
IPGJT08-06
IPGJT10-08
IPGJT12-10

IPCP



MODEL				
IPCP04-01	IPCP06-02	IPCP08-03	IPCP10-04	IPCP12-04
IPCP04-02	IPCP08-01	IPCP10-02	IPCP12-02	
IPCP06-01	IPCP08-02	IPCP10-03	IPCP12-03	

IPLP



MODEL				
IPLP04-01	IPLP06-02	IPLP08-03	IPLP10-04	IPLP12-04
IPLP04-02	IPLP08-01	IPLP10-02	IPLP12-02	
IPLP06-01	IPLP08-02	IPLP10-03	IPLP12-03	

IPCP-G



MODEL				
IPCP04-M5	IPCP06-M5	IPCP08-G01	IPCP10-G02	IPCP12-G02
IPCP04-G01	IPCP06-G01	IPCP08-G02	IPCP10-G03	IPCP12-G03
IPCP04-G02	IPCP06-G02	IPCP08-G03	IPCP10-G04	IPCP12-G04

IPLP-G



MODEL				
IPLP04-M5	IPLP06-M5	IPLP08-G01	IPLP10-G02	IPLP12-G02
IPLP04-G01	IPLP06-G01	IPLP08-G02	IPLP10-G03	IPLP12-G03
IPLP04-G02	IPLP06-G02	IPLP08-G03	IPLP10-G04	IPLP12-G04

IPHP-G



MODEL				
IPHP04-M5	IPHP06-M5	IPHP06-G02	IPHP08-G02	IPHP10-G02
IPHP04-G01	IPHP06-G01	IPHP08-G01	IPHP08-G03	IPHP10-G03



IPVP



MODEL
IPVP 04
IPVP 06
IPVP 08
IPVP 10
IPVP 12

IPMP



MODEL
IPMP 04
IPMP 06
IPMP 08
IPMP 10
IPMP 12

IPUP



MODEL
IPUP 04
IPUP 06
IPUP 08
IPUP 10
IPUP 12

IPEP



MODEL
IPEP 04
IPEP 06
IPEP 08
IPEP 10
IPEP 12

IPBP



MODEL				
IPBP04-01	IPBP06-02	IPBP08-03	IPBP10-04	IPBP12-04
IPBP04-02	IPBP08-01	IPBP10-02	IPBP12-02	
IPBP06-01	IPBP08-02	IPBP10-03	IPBP12-03	

IPBP-G



MODEL				
IPBP04-M5	IPBP06-M5	IPBP08-G01	IPBP10-G02	IPBP12-G02
IPBP04-G01	IPBP06-G01	IPBP08-G02	IPBP10-G03	IPBP12-G03
IPBP04-G02	IPBP06-G02	IPBP08-G03	IPBP10-G04	IPBP12-G04

IBA



MODEL
IBA-G01
IBA-G02
IBA-G03
IBA-G04
IBA-G02G01
IBA-G03G02

IBD



MODEL
IBD-G0102
IBD-G0103
IBD-G0104
IBD-G0203
IBD-G0204
IBD-G0304

IBZ



MODEL
IBZ-01
IBZ-02
IBZ-03
IBZ-04

IBB



MODEL
IBB-01
IBB-02
IBB-03
IBB-04
IBB-0102
IBB-0103
IBB-0203
IBB-0204
IBB-0304

IBP



MODEL
IBP-01
IBP-02
IBP-03
IBP-04

IBP-G



MODEL
IBP-G01
IBP-G02
IBP-G03
IBP-G04

CEF



MODEL
CEF-G01
CEF-G02
CEF-G03
CEF-G04

CET



MODEL
CET-01
CET-02
CET-03
CET-04

CLFM



MODEL
CLFM-G0101
CLFM-G0202
CLFM-G0303
CLFM-G0404

CLF



MODEL
CLF-G01
CLF-G02
CLF-G03
CLF-G04

CL



MODEL
CL-01
CL-0102
CL-0103
CL-02
CL-0203
CL-0204
CL-03
CL-0304
CL-04



I **BC** **8 - 01** - * - *
(1) (2) (3) (4) (5) (6)

ISAIAH FITTINGS
号 PUSH ON FITTINGS MODEL
不旋转弯头型号 BZL WON'T BE SWIVEL ELBOW TYPE
(3) TUBE OUTER DIA

/Code	4	6	8	10	12
Tube Outer Diameter mm	Φ4	Φ6	Φ8	Φ10	Φ12

THREAD TYPE AND SIZE

55°Taper Pipe Thread					
/Code	01	02	03	04	06
Tube Outer Diameter mm	R1/8	R1/4	R3/8	R1/2	R3/4

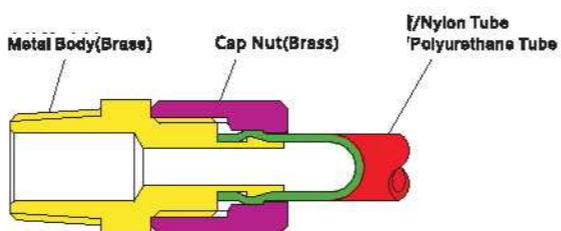
55°G-Thread					
/Code	G01	G02	G03	G04	G06
Tube Outer Diameter mm	G1/8	G1/4	G3/8	G1/2	G3/4

公制螺纹 METRIC SIZE
用公制螺纹标准表示方法表示, 例: M5, M10X1
THE METHOD OF METRIC THREAD, EX: M5, M10X1

THE SPECIFICATION OF PUSHING TUBE I.D. REFER TO THE PICTURE AT RIGHT

(6)表示快拧接头螺母 ATTACHED THE THREAD OF PUSH ON FITTING
空白/BLANK:滚花螺母/KNURLING S:六角螺母/HEXAGON

STRUCTURE CHART



/Code	/Blank	A	B
4	4X2.5		
6	6X4		
8	8X6	8X5	
10	10X8	10X6.5	
12	12X10	12X8	12X9

IBU



MODEL
IBU04
IBU06
IBU08
IBU10
IBU12

IBV



MODEL
IBV04
IBV06
IBV08
IBV10
IBV12

IBF



MODEL	
IBF04-01	IBF10-02
IBF06-01	IBF10-03
IBF06-02	IBF10-04
IBF08-01	IBF12-02
IBF08-02	IBF12-03
IBF08-03	IBF12-04

IBE



MODEL
IBE04
IBE06
IBE08
IBE10
IBE12

IBL



MODEL		
IBL04-M5	IBL08-01	IBL10-04
IBL04-M6	IBL08-02	IBL12-02
IBL04-01	IBL08-03	IBL12-03
IBL06-01	IBL10-02	IBL12-04
IBL06-02	IBL10-03	

IBC



MODEL	
IBC04-M5	IBC08-02
IBC04-M6	IBC08-03
IBC04-01	IBC10-02
IBC04-02	IBC10-03
IBC06-01	IBC10-04
IBC06-02	IBC12-02
IBC06-03	IBC12-03
IBC06-01	IBC12-04

IBT



MODEL	
IBT04-M5	IBT08-03
IBT04-M6	IBT10-02
IBT04-01	IBT10-03
IBT06-01	IBT10-04
IBT06-02	IBT12-02
IBT08-01	IBT12-03
IBT08-02	IBT12-04

IKL



MODEL	
IKL04-01	IKL08-04
IKL04-02	IKL10-02
IKL06-01	IKL10-03
IKL06-02	IKL10-04
IKL08-03	IKL12-02
IKL08-01	IKL12-03
IKL08-02	IKL12-04
IKL08-03	

IKST



MODEL	
IKST04-01	IKST08-04
IKST04-02	IKST10-02
IKST06-01	IKST10-03
IKST06-02	IKST10-04
IKST06-03	IKST12-02
IKST08-01	IKST12-03
IKST08-02	IKST12-04
IKST08-03	

IKC



MODEL	
IKC04-01	IKC08-04
IKC04-02	IKC10-02
IKC06-01	IKC10-03
IKC06-02	IKC10-04
IKC06-03	IKC12-02
IKC08-01	IKC12-03
IKC08-02	IKC12-04
IKC08-03	

IKT



MODEL	
IKT04-01	IKT08-04
IKT04-02	IKT10-02
IKT06-01	IKT10-03
IKT06-02	IKT10-04
IKT06-03	IKT12-02
IKT08-01	IKT12-03
IKT08-02	IKT12-04
IKT08-03	

IKE



MODEL
IKE 04
IKE 06
IKE 08
IKE 10
IKE 12

IKF



MODEL	
IKF04-01	IKF08-04
IKF04-02	IKF10-02
IKF06-01	IKF10-03
IKF06-02	IKF10-04
IKF08-03	IKF12-02
IKF08-01	IKF12-03
IKF08-02	IKF12-04
IKF08-03	

IKV



MODEL
IKV 04
IKV 06
IKV 08
IKV 10
IKV 12

IKLF



MODEL	
IKLF04-01	IKLF08-04
IKLF06-01	IKLF10-02
IKLF06-02	IKLF10-03
IKLF06-03	IKLF10-04
IKLF08-01	IKLF12-02
IKLF08-02	IKLF12-03
IKLF08-03	IKLF12-04

IKU



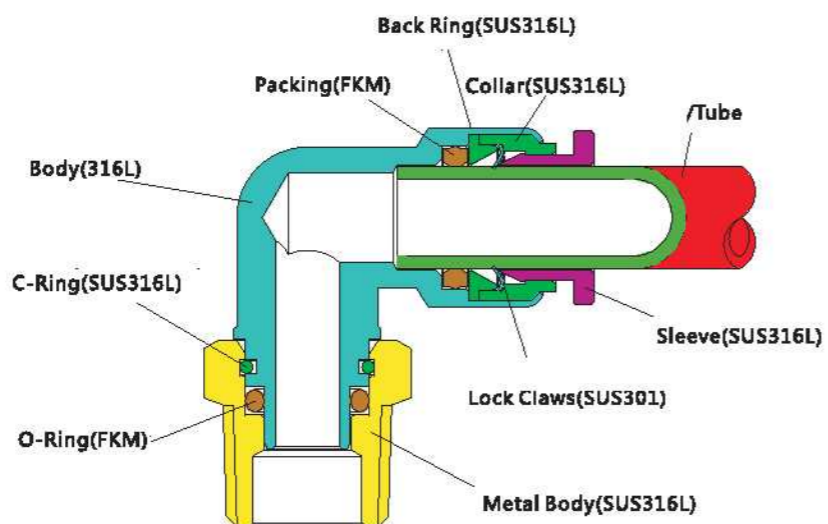
MODEL
IKU 04
IKU 06
IKU 08
IKU 10
IKU 12



FEATURES

- The materials ensure Anti-Corrosion highly, all of them are made from SUS316 except the seal ring.
- FKM is used as the seal ring, which can ensure Anti-Corrosion and acid resistant, also can be used in high temperature.
- The accessories are oil-free and reach the Food Hygiene Law of People's Republic of China, which are applied widely in the range of industry such as food service industry, chemical industry and medical industry.

STRUCTURE CHART



SPECIFICATIONS

/Fluid	'Air, Water, Steam
Operating Pressure	0~1.2MPa
Max Pressure	1.8MPa
Operating Temperature	-20°C~120°C

SSC



MODEL	
SSC04-01	SSC10-02
SSC06-01	SSC10-03
SSC06-02	SSC12-03
SSC08-01	SSC12-04
SSC08-02	

SSC-G



MODEL	
SSC04-M5	SSC08-G02
SSC04-G01	SSC10-G02
SSC06-M5	SSC10-G03
SSC06-G01	SSC12-G03
SSC06-G02	SSC12-G04
SSC08-G01	

SSL



MODEL	
SSL04-01	SSL10-02
SSL06-01	SSL10-03
SSL06-02	SSL12-03
SSL08-01	SSL12-04
SSL08-02	

SSL-G



MODEL	
SSL04-M5	SSL08-G02
SSL04-G01	SSL10-G02
SSL06-M5	SSL10-G03
SSL06-G01	SSL12-G03
SSL06-G02	SSL12-G04
SSL08-G01	

SSB



MODEL	
SSB04-01	SSB10-02
SSB06-01	SSB10-03
SSB06-02	SSB12-03
SSB08-01	SSB12-04
SSB08-02	

SSB-G



MODEL	
SSB04-M5	SSB08-G02
SSB04-G01	SSB10-G02
SSB06-M5	SSB10-G03
SSB06-G01	SSB12-G03
SSB06-G02	SSB12-G04
SSB08-G01	

SSE



MODEL
SSE 04
SSE 06
SSE 08
SSE 10
SSE 12

SSV



MODEL
SSV 04
SSV 06
SSV 08
SSV 10
SSV 12

SSU



MODEL
SSU 04
SSU 06
SSU 08
SSU 10
SSU 12

SSM



MODEL
SSM 04
SSM 06
SSM 08
SSM 10
SSM 12



Note: the following products can be chosen material for iron, brass, stainless steel

SM



MODEL
SM102
SM103
SM104

SF



MODEL
SF202
SF203
SF204

SH



MODEL
SH302 For 1/8" hose
SH303 For 1/4" hose
SH304 For 3/8" hose

SA



MODEL
SA402 5X8
SA403 6.5X10
SA404 8X12

PM



MODEL
PM502
PM503
PM504

PF



MODEL
PF602
PF603
PF604

PH



MODEL
PH702 For 1/8" hose
PH703 For 1/4" hose
PH704 For 3/8" hose

PA



MODEL
PA802 5X8
PA803 6.5X10
PA804 8X12

Y



MODEL
SF2A
SF3A

W



MODEL
SF4B
SF5B
SF6B



BSL-G



MODEL	
BSL-M5	BSL-G06
BSL-G01	BSL-G10
BSL-G02	BSL-G12
BSL-G03	BSL-G14
BSL-G04	

ISD-G



MODEL	
ISD-G01	ISD-G04
ISD-G02	ISD-G06
ISD-G03	ISD-G10

BESL-G



MODEL
BESL-G01
BESL-G02
BESL-G03
BESL-G04

BSLM-G



MODEL	
BSLM-M5	BSLM-G04
BSLM-G01	BSLM-G06
BSLM-G02	BSLM-G10
BSLM-G03	

SDV-G



MODEL	
SDV-G01	SDV-G04
SDV-G02	SDV-G06
SDV-G03	SDV-G10

PSE-G



MODEL	
PSE-G01	PSE-G04
PSE-G02	PSE-G06
PSE-G03	PSE-G10

PSL-G



MODEL	
PSL-G01	PSL-G04
PSL-G02	PSL-G06
PSL-G03	PSL-G10

PSU-G



MODEL	
PSU-M5	PSU-G04
PSU-G01	PSU-G06
PSU-G02	PSU-G10
PSU-G03	



FEATURES

- Flexible polyurethane material, which is reached the ROHS environmental protection requirements;
- High elasticity, the PU tube can through a tight space when the tube with a small bending;
- The knot: knot effects are better than other plastic pipes;
- Excellent plastic back: withstand repeated expansion;
- Breakage-proof: long life span, which is applicable to the easy wear and tear environment;
- Low permeability of gas: decrease the permeability and pollution;
- Good resistance to dissolve: no solvent will be leaked out, the environment pollution won't be happened;
- Low compressibility: maintaining good physical properties;
- A wide range of resistance: chemicals, water, fuel, oil and bacteria with a certain resistance.

SPECIFICATIONS

Material	PU
流体/Fluid	空气, 水/Air, Water
玉力范围/Burst pressure(20°C)	2.0Mpa
Operating Pressure	0.8Mpa(8.2Kgf/cm)
Operating Temperature	-20°C~+60°C

Code	(mm) O.D	(mm) I.D	(23°C, bar) Operating Pressure	(23°C, bar) Burst Pressure	(mm) Bend Radius	(m) Length
3x2	Φ3	Φ2	7.5	30	6	200
4x2	Φ4	Φ2	8	44	8	200
4x2.5	Φ4	Φ2.5	8	35	10	200
5x3	Φ5	Φ3	8	35	15	200
6x4	Φ6	Φ4	7.5	30	15	200
8x5	Φ8	Φ5	8	35	20	100
8x5.5	Φ8	Φ5.5	6	24	20	100
8x6	Φ8	Φ6	4	16	25	100
10x6.5	Φ10	Φ6.5	8	32	25	100
10x7.5	Φ10	Φ7.5	4	16	35	100
12x8	Φ12	Φ8	7.5	30	35	100
12x9.5	Φ12	Φ9.5	4	16	50	100
14x10	Φ14	Φ10	6	24	60	50
16x11	Φ16	Φ11	8	35	70	50
16x12	Φ16	Φ12	7.5	30	80	50

MODE TYPE

PU	8X5	100	BK	CODE
Polyurethane Tube	Tube Dia	LENGTH(m) 100m/卷	/Transparent /Black /Blue /Orange 蓝/ isparent blue 紫/ isparent green /Dark blue /Light blue /yellow /Red Green /Silver	TR BK BU OR TRBU TRGN DKBU LTBU YL RD GN SV



MODE TYPE

UC	8X5	3	BK	CODE
Polyurethane Coil Tube	Tube Dia	LENGTH(m)	COLOR 透明/Transparent 黑色/Black 蓝色/Blue /Orange	TR BK BU OR
	Code O.D I.D	3 6 7.5 9 12 15		
	6x4 Φ6 Φ4			
	8x5 Φ8 Φ5			
	8x5.5 Φ8 Φ5.5			
	10x6.5 Φ10 Φ6.5			
	12x8 Φ12 Φ8			



Note: We can do other length and color for UC tube.



TUBE CUT



'BK : Black
'BU : Blue

IAG-B



'BU : Blue
'R : Red

AD-2-300A

Ideal for dusting at difficult-to-reach area with standard Nozzle type(300mm).



AD-2-100A

For comfortable control over its pinpointed dusting with less fatigue.



AD-2-100N

Ideal for dusting at difficult-to-reach area with standard Nozzle type(100mm).



AD-2-0N

Applicable for dusting metal and wood cut, automotive dust and paint wet.



PGQ Air Gun

/Application

This product is used to blow off the metal chips left inside the parts, external surfaces, machine tools or operating platforms as well as dusts and other foreign substances. It is especially suitable for the occasions of machining and assembly.

/Technical Parameters:

/Working Medium: /compressed air
/Media Temperature and Ambient Temperature: 5~60℃
/Nominal Pressure: 0.8MPa
/Spray Port Diameter: φ2.5mm

/Features:

- This product is advanced in technology and reasonable in design. It has comfortable hold feel and easy operation.
- The gun are die-cast by aluminum alloy and are very light.
- Made of aluminum alloy and formed through die-casting, the gun is quite light. The air nozzle is made of copper alloy, which makes the gun stronger and more durable than those made of other materials.



PSQ Sand Blasting Gun

Features:

- This product is advanced in technology and reasonable in design. It has comfortable hold feel and easy operation.
- The gun and sand blasting pipe are die-cast by aluminum alloy and are very light.
- The spray port is made of ceramics, which has fine abrasive resistance and long service life.

/Technical Parameters:

/Working Medium: /compressed air
/Media Temperature and Ambient Temperature: 5~60℃
/Nominal Pressure: 0.8MPa
/Spray Port Diameter: φ4.5、φ5、φ6.5、φ8.5mm



www.hidropraks.com.tr